

# MONTHLY MEMBERSHIP PROGRESS REPORT

District 351

Results as of: 12/31/2023

GMT:

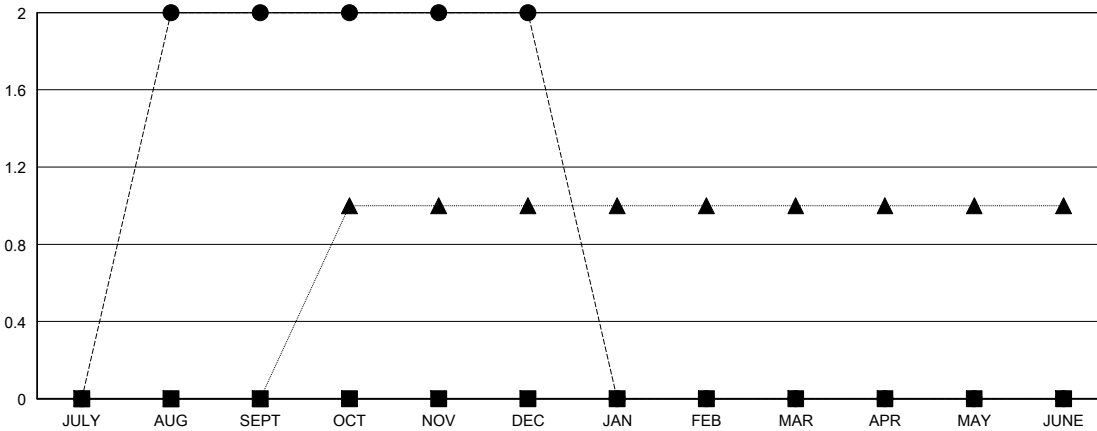
LOCATION LEBANON

GMT CA

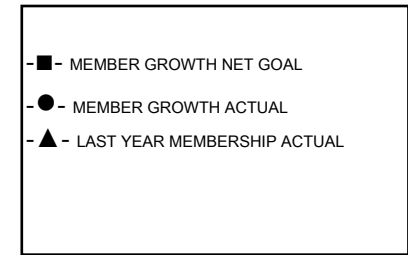
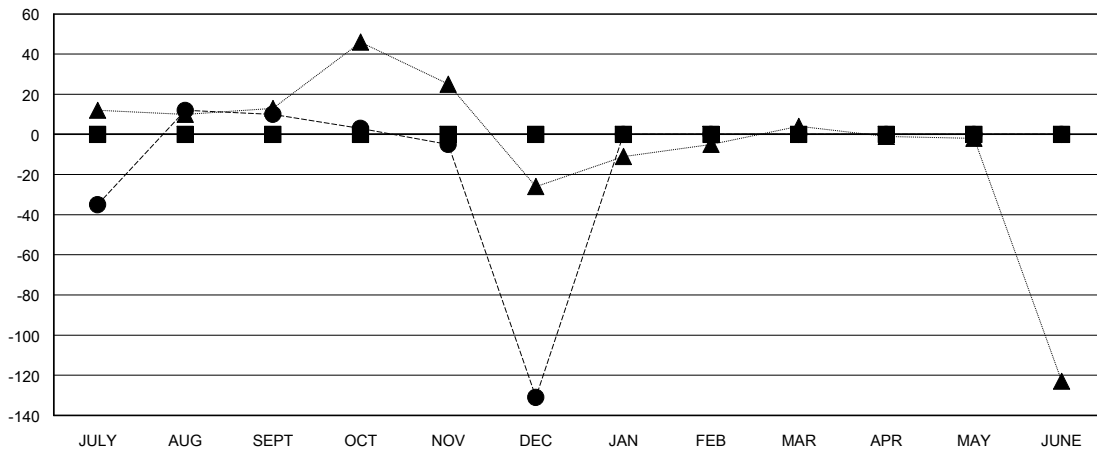
Clubs			
RESULTS FOR 2023-2024			
QUARTER	NEW CLUB GOAL	NEW CLUBS	DROPPED CLUBS
JULY/AUG/SEPT	0	2	0
OCT/NOV/DEC	0	0	6
JAN/FEB/MAR	0	0	0
APR/MAY/JUNE	0	0	0

Members			
RESULTS FOR 2023-2024			
QUARTER	MEMBER GROWTH NET GOAL	MEMBER GROWTH ACTUAL	DROPPED MEMBERS ACTUAL (including transfers)
JULY/AUG/SEPT	0	127	87
OCT/NOV/DEC	0	54	185
JAN/FEB/MAR	0	0	0
APR/MAY/JUNE	0	0	0

GOALS AND ACTUAL NEW CLUBS CUMULATIVE



GOALS AND ACTUAL MEMBERS CUMULATIVE



DROPPED CLUBS: 6	39 CLUBS OF 116 ADDED 1 OR MORE NEW MEMBERS	<b>GENDER DISTRIBUTION</b>
		MALE 1,020 (51.93%)
		FEMALE 944 (48.07%)
<b>DROPPED MEMBERS</b>	<a href="#">CLICK HERE FOR CUMULATIVE MEMBERSHIP DATA</a>	TOTAL FAMILY UNIT MEMBERS 765
DECEASED 12		FAMILY MEMBERS PAYING HALF DUES 484
CLUB CANCELLED 80		
OTHER 180		
<b>TOTAL 272</b>		